



PRINCE PHILIP HOUSE

A Versatile and Accessible Event Venue in Central London

Prince Philip House, home to The Royal Academy of Engineering was designed by the renowned Regency-era architect John Nash.

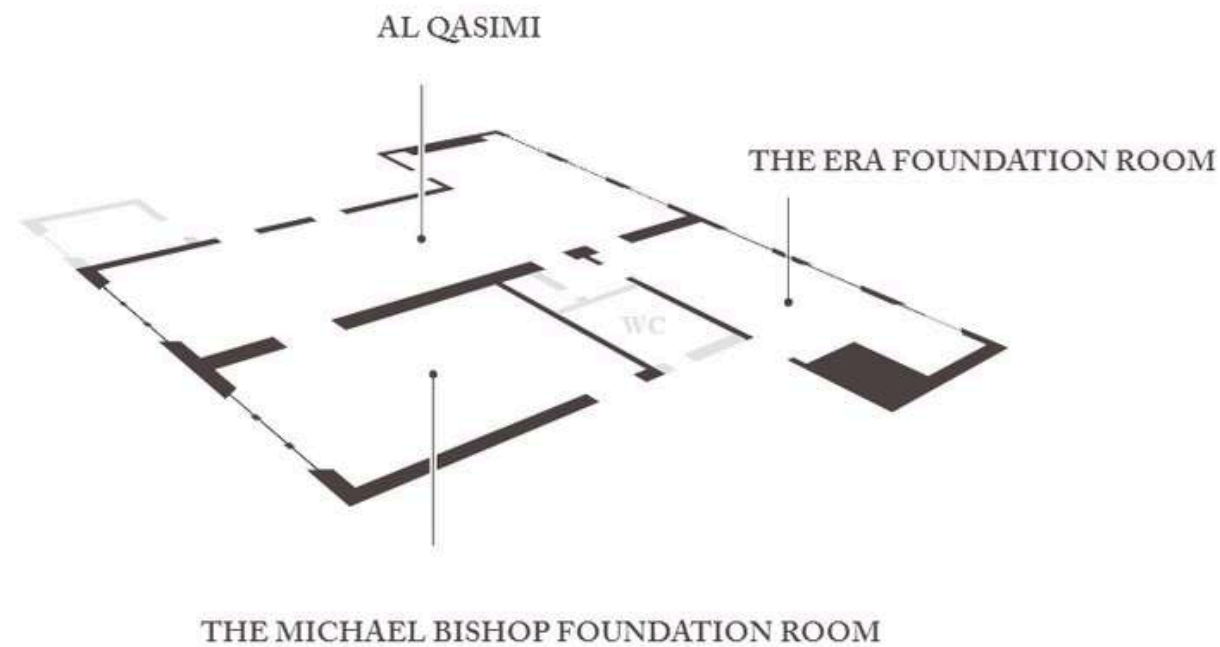
Nash, a key figure in shaping the architectural landscape of London, is best known for his design of Carlton House Terrace—a Grade I listed row of townhouses built between 1827 and 1832, gracefully positioned along The Mall, near St James's Park.

This distinguished event venue, located in the heart of Central London, offers a selection of seven beautifully appointed rooms, each thoughtfully designed to host a variety of events.

With versatile capacities ranging from 6 to 250 guests per floor, Prince Philip House can be tailored to suit intimate gatherings, grand receptions, or large-scale conferences, making it the perfect setting for events of all sizes.

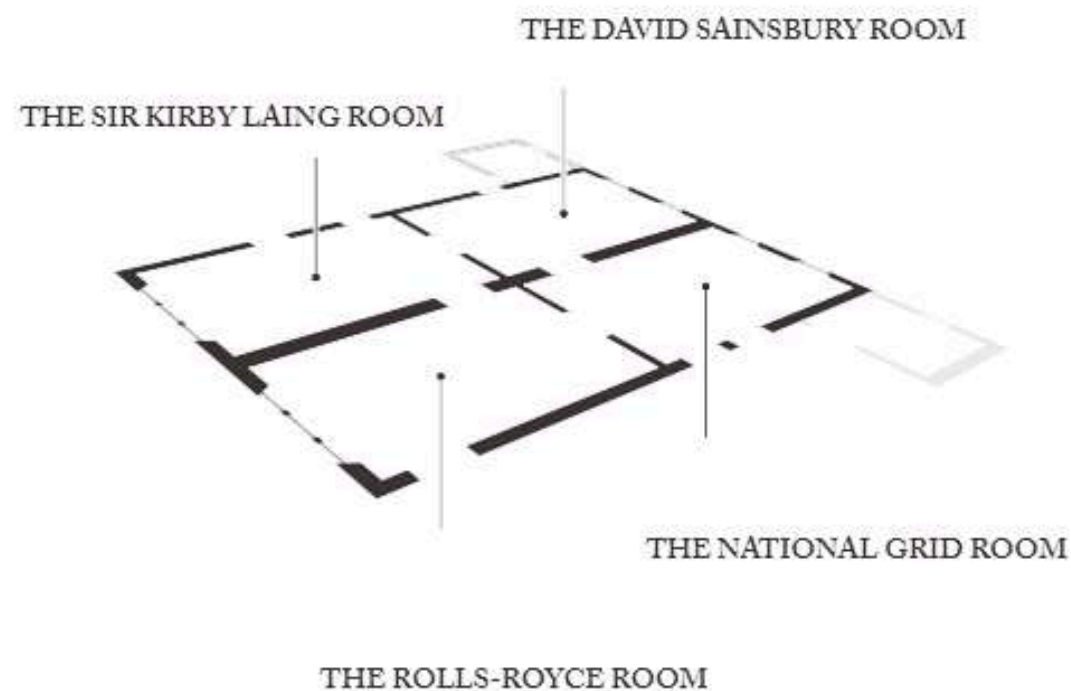
PRINCE PHILIP
HOUSE

Rooms at Prince Philip House



Each of our event spaces are equipped with cutting-edge AV technology for a seamless event experience.

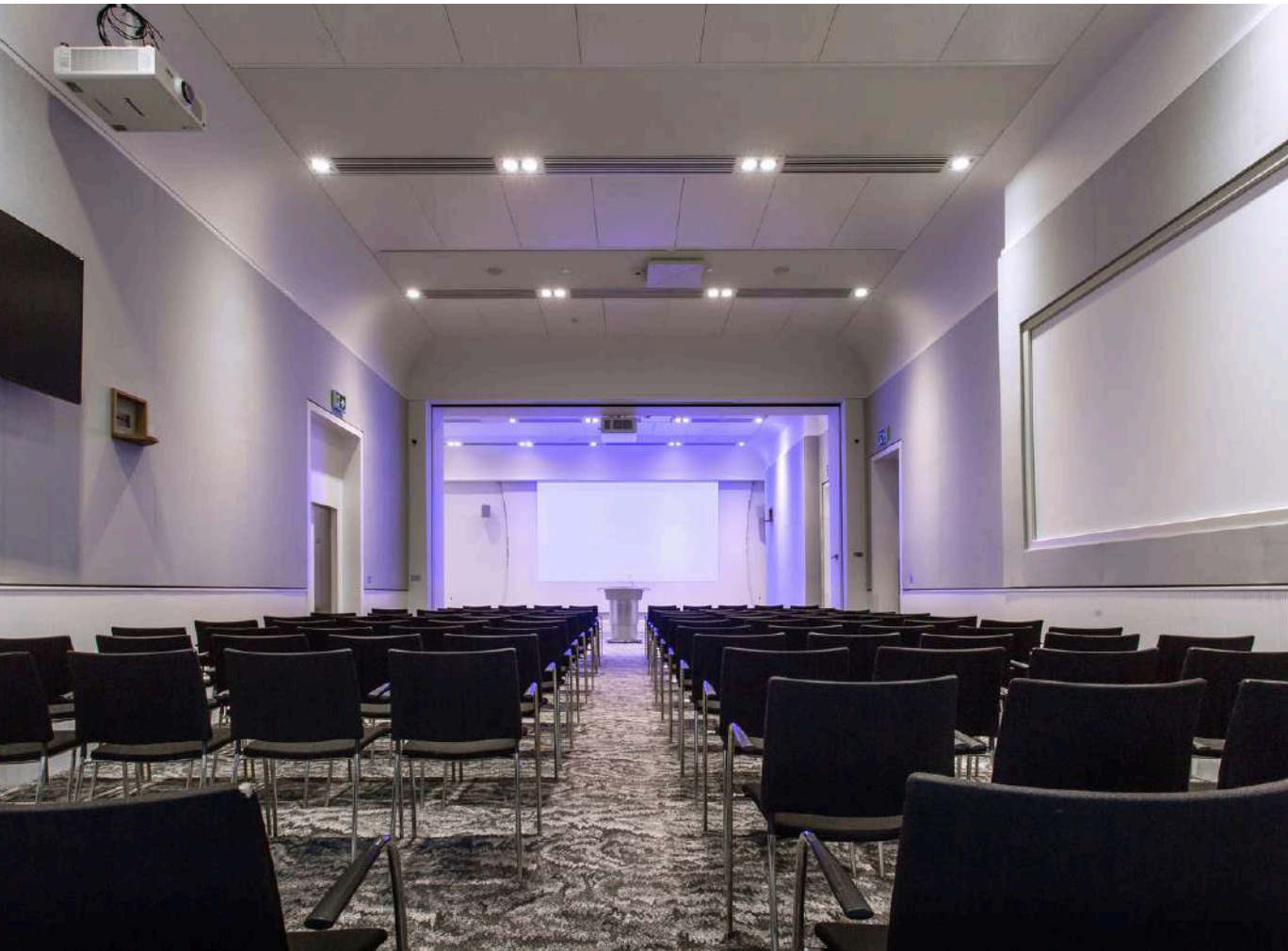
The First Floor consists of the Al Qasimi, ERA Foundation and The Michael Bishop Foundation.



The Ground Floor is made up on four near identical event spaces: The Rolls Royce, Sir Kirby Laing, National Grid and The David Sainsbury.

The event spaces are interconnected on each floor, allowing for smooth transition between rooms.

Al Qasimi & ERA Foundation



An adaptable, modern space ideal for conferences, product launches, dinners, weddings, drinks receptions, and both private and corporate events.

Featuring a built-in stage, large screen, and advanced AV, it can also be divided into Al Qasimi North and South for tailored setups. Adjoining the Al Qasimi Room, the ERA Foundation Room serves as a bright, open-plan space with high ceilings, perfect for catering, breakout sessions, or exhibitions, making it an ideal extension for events requiring additional areas.

Capacities

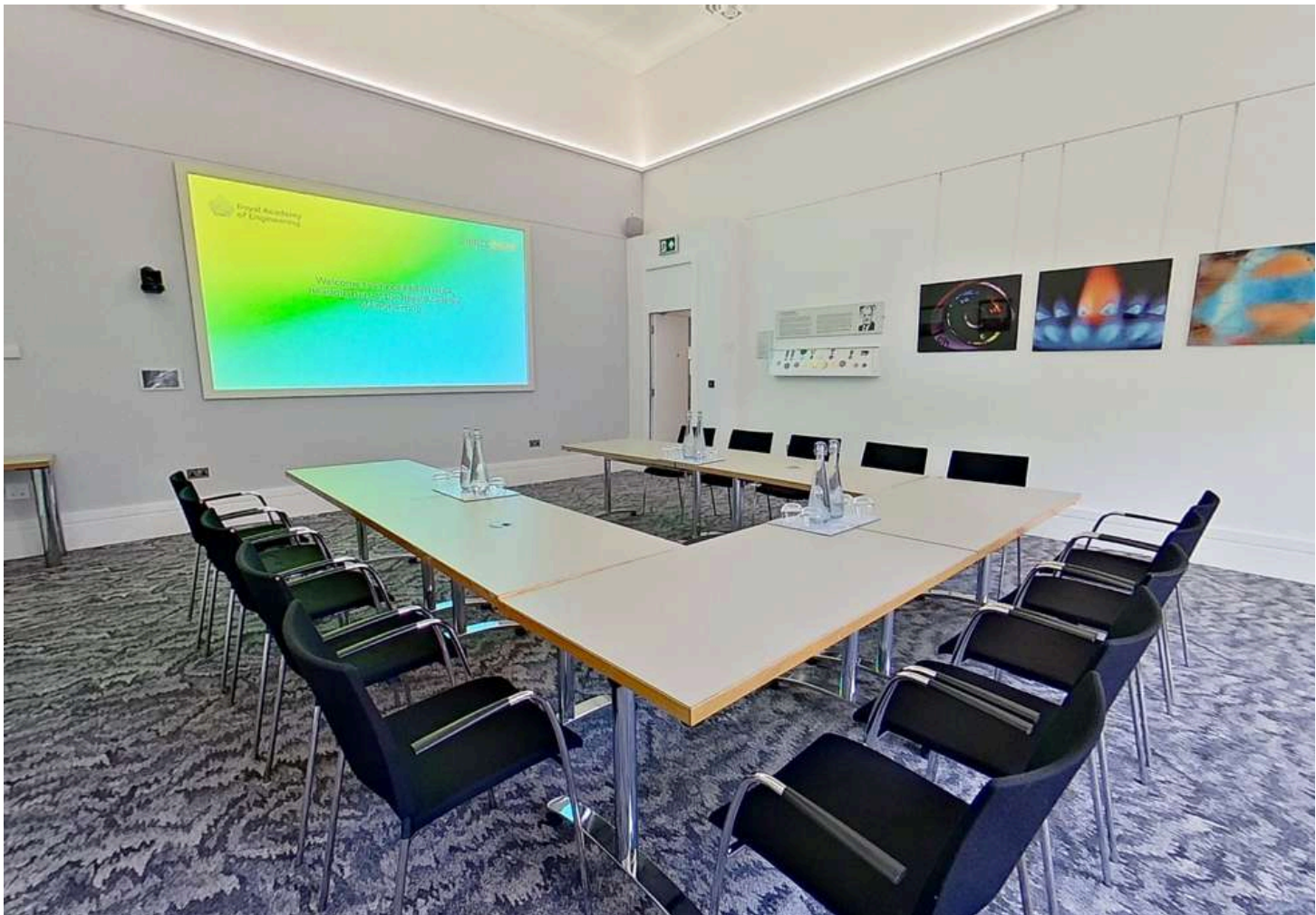
Boardroom	50	Theatre	180
Dinner	120	Cabaret	100
Reception	200	U-Shaped	50

A flexible, blank canvas ideal for a range of small events, particularly those complementing the Al Qasimi Room. With its expansive windows, the space boasts stunning views over Waterloo Gardens, creating a tranquil and inspiring atmosphere. While predominantly used for intimate executive discussions, the room is equally well-suited for exhibitions & breakout sessions. Its adaptable layout allows for seamless transitions between event formats, ensuring a tailored and engaging experience for your guests.

Capacities

Boardroom	20	Theatre	50
Dinner	32	Cabaret	28
Reception	50	U-Shaped	16

Michael Bishop
Foundation



Rolls Royce



The Rolls-Royce Room at Prince Philip House offers a prestigious and versatile setting for high-level meetings, conferences, or intimate events.

With a sleek, modern design and state-of-the-art facilities, this room comfortably accommodates up to 80 guests, making it ideal for presentations, workshops, or executive briefings. The Rolls-Royce Room combines elegance with practicality, providing a seamless, professional experience for your event.

Capacities

Boardroom	28	Theatre	70
Dinner	48	Cabaret	35
Reception	80	U-Shaped	24

A serene and refined space, perfectly suited for focused meetings, conferences, and private dinners. With expansive windows, the room offers picturesque views of Waterloo Gardens. Equipped with modern audio-visual capabilities, including state-of-the-art projection and sound systems, it meets the demands of a wide range of events.

All ground floor rooms can seamlessly connect with adjacent spaces, allowing for flexible configurations and an expanded capacity to suit larger gatherings.

Capacities

Boardroom	28	Theatre	80
Dinner	48	Cabaret	35
Reception	80	U-Shaped	24

Sir Kirby Laing



National Grid



The National Grid Room at Prince Philip House is an elegant, naturally lit space with views of The Mall and St. James's Park, ideal for smaller gatherings, breakout sessions, or drink receptions. It offers high ceilings, charming balcony for fresh air and outdoor access, blackout options, and adjustable ceiling lights. AV features include built-in screens, projection, and versatile lighting to support presentations and media needs. The room connects seamlessly with adjacent areas, allowing for easy expansion to accommodate larger events.

Capacities

Boardroom	24	Theatre	60
Dinner	40	Cabaret	28
Reception	60	U-Shaped	24



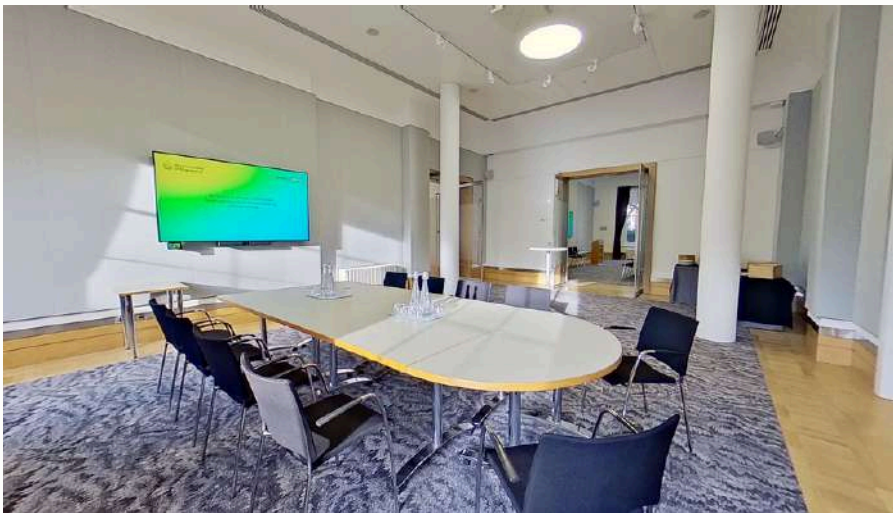
David Sainsbury

A sophisticated, flexible event space ideal for meetings, conferences, and workshops.

This beautifully designed room offers contemporary amenities, natural light, and a sleek, professional atmosphere – perfect for corporate and private gatherings. This ground floor room is usually adjoined to National Grid for additional function and capacity.

Capacities

Boardroom	24	Theatre	60
Dinner	40	Cabaret	28
Reception	60	U-Shaped	24



AV Capabilities

Ground Floor

Our four, near identical ground floor rooms are all equipped with the same standard of high-tech audio-visual equipment, including:

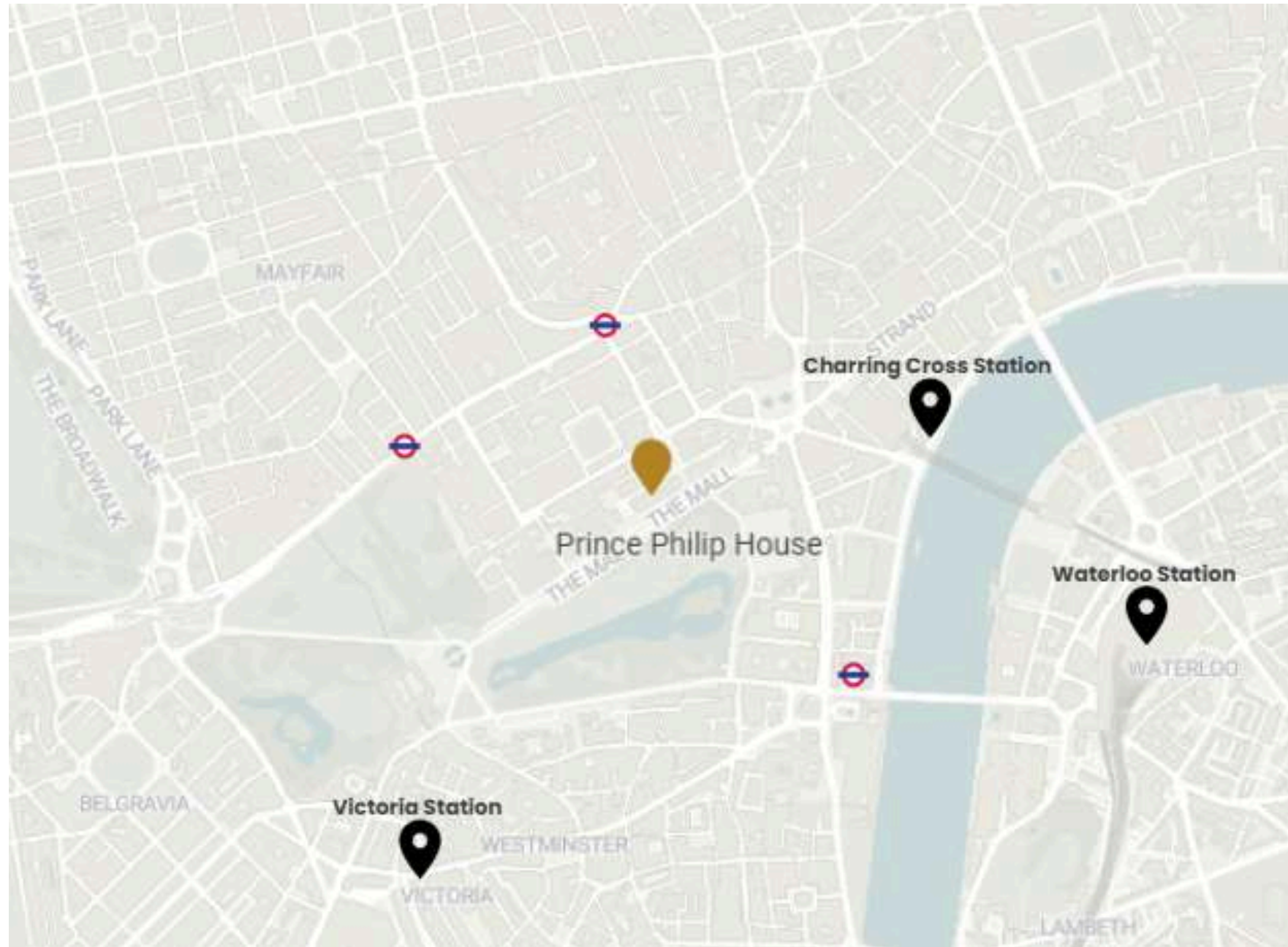
- 86" plasma screen
- Video camera/audio bar for streaming or recording in 4k for hybrid conferencing via Teams or Zoom*
- Four wireless microphones (x1 complimentary)*
- Wall plate and floor box for connectivity via Clickshare or HDMI
- Multifunctional LED wall lighting with touch pad controls
- Lectern available, please ask our team for details*

1st Floor

The 1st Floor consists of three interconnecting rooms, perfect for conferences and networking events. The main keynote space, The Al Qasimi is fitted with high-quality AV, including:

- High definition projector with a 3m drop down screen
- 6m x 2m accessible staging
- 98" plasma screen
- Repeater screens
- Video camera/audio bar for streaming or recording in 4k for hybrid conferencing via Teams or Zoom
- Full audio package (x1 microphone complimentary)*
- Wall plate and floor box for connectivity via Clickshare or HDMI
- Multifunctional LED wall lighting with touch pad controls
- Lectern available, please ask our team for details
- Inhouse technical support*

**additional charges apply*



3-4 Carlton Terrace, London, SW1Y 5DG

+44(0) 20 7766 0625

Info@princephiliphouse.com

www.princephiliphouse.com



PRINCE PHILIP
HOUSE